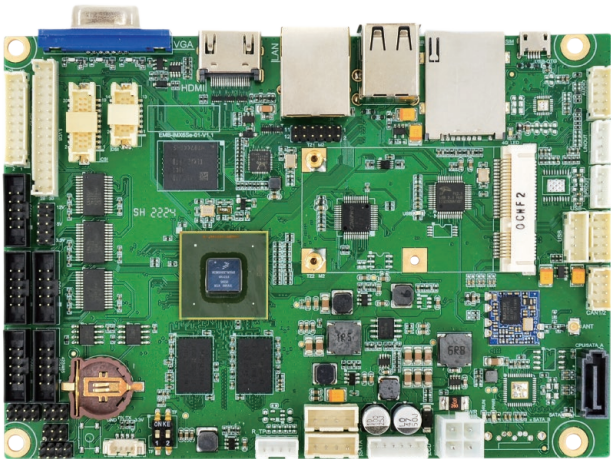
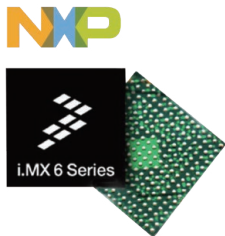


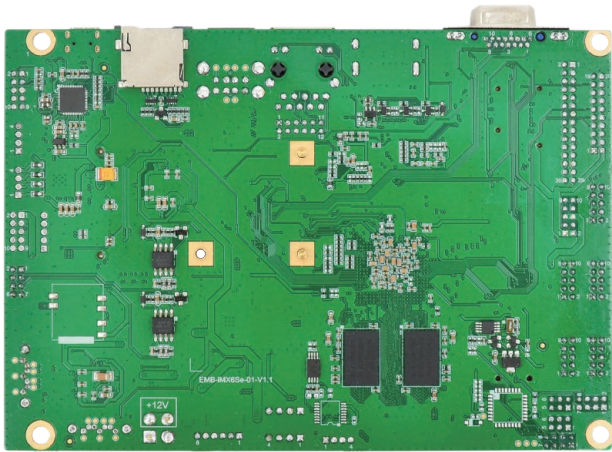
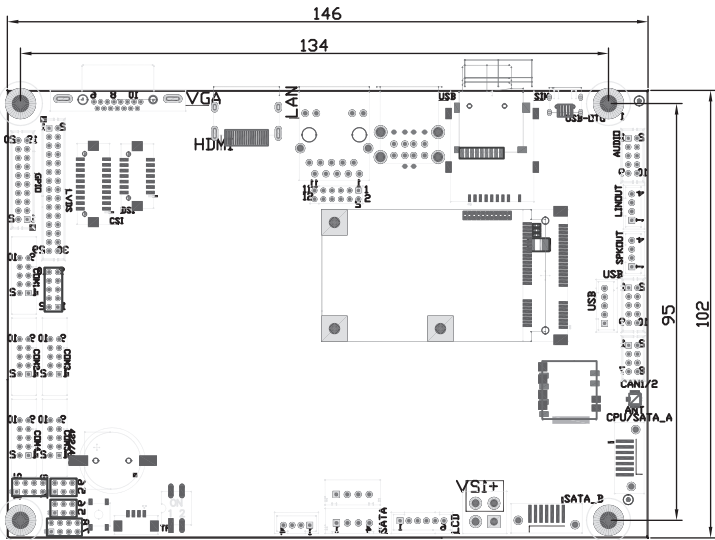


3.5" Motherboard Based on NXP i.MX 6 Series Processors

- NXP i.MX 6DualLite 1.0GHz/6Quad 1.0GHz (NXP i.MX 6Solo/NXP i.MX 6Dual optional)
- Onboard DDR3 1066MHz 1GB memory and 8GB eMMC Nand Flash (default)
- Supports Triple Display: VGA/HDMI/LVDS
- Supports 1x Mini-PCle, 4x RS232, 1x RS485, 5x USB2.0, 2x CAN, 1x SIM, 1x Micro SD slot
- 3.5 inch mini size, low power consumption
- Supports Yocto 2.5.2, Android 9.0, Ubuntu 16.04



Structure Diagram



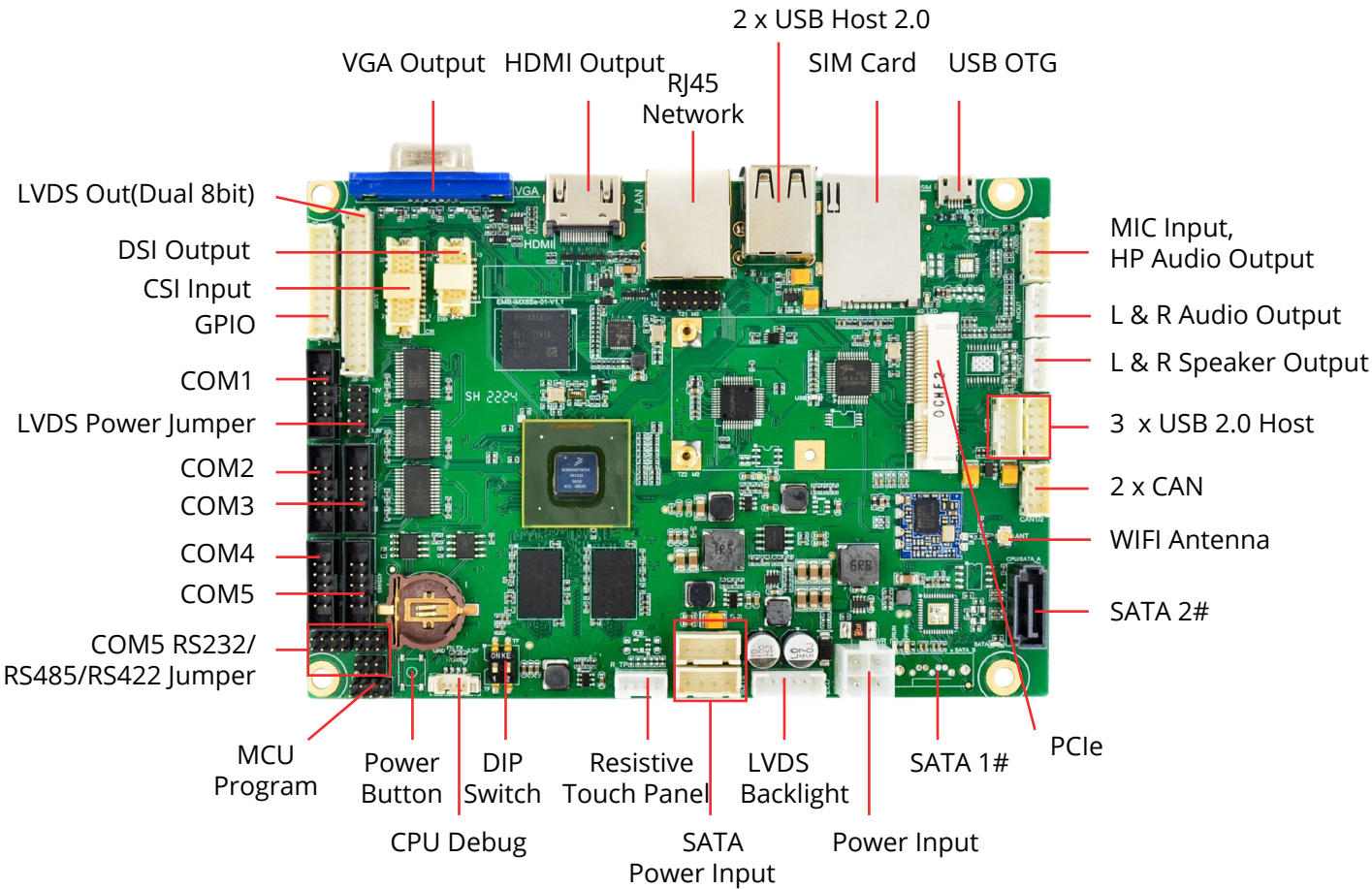
Ordering Information

| Part Number | CPU | RAM | Storage | Display | GbE | USB | Audio | Mini-PCle | SATA | Operating Temp |
|---------------|---|----------|----------|-------------------|-----|--------------------------|-------|-----------|------|--|
| EMB-iMX6Se-01 | NXP i.MX 6DualLite 1.0GHz /6Quad 1.0GHz | 1GB DDR3 | 8GB eMMC | HDMI + VGA + LVDS | 1 | 5 USB 2.0 1 Micro USB | 1 | 1 | 2 | 6DualLite: 0 C to +60 C 6Quad: -20 C to +70 C |

Technical Specification:

| System | |
|--------------------------|---|
| Processor | NXP i.MX 6DualLite 1.0GHz (Commercial) or i.MX 6Quad 1.0GHz (Extended Commercial) |
| | NXP i.MX 6Solo/i.MX 6Dual optional |
| Architecture | ARM Cortex-A9 |
| Memory | Onboard 1GB DDR3(Default), up to 2GB |
| Storage | eMMC 8GB (Default),16GB/32GB (optional) |
| Operating System | Yocto 2.5.2, Android 9.0, Ubuntu 16.04 |
| Communication | |
| LAN | 1 x 10Mbps/100Mbps/1000Mbps RJ45 port |
| WiFi | 1 x RTL8188WEUS |
| Bluetooth | 1 x RTL8723 (optional) |
| Expansion Interfaces | |
| Expansion Slots | 1 x Mini-PCle with SIM Card Slot |
| Internal Headers | |
| Internal Display | 1 x Dual channel 8bit LVDS (expansion header) |
| Expansion Headers | 2 x SATA and SATA Power Input |
| | 1 x DSI |
| | 1 x CSI |
| | 4 x RS232, 1 x RS232/RS422/RS485 |
| | 3 x USB2.0 |
| | 1 x Power |
| | 1 x GPIO |
| | 2 x CAN |
| | 1 x SPK(L&R) |
| | 1 x Audio(Mic In , HP Out, Line In) |
| | 1 x RTP(4wire TouchPanel) |
| | 1 x RTC |
| External Connectors | |
| External Display | 1 x VGA, 1 x HDMI |
| Network | 1 x RJ45 AR8033 |
| USB Host | 2 x USB 2.0 |
| SIM Card Slot | 1 x SIM |
| SD Card Slot | 1 x Micro SD card slot |
| USB OTG | 1 x Micro USB |
| Audio | |
| Audio Codec | NS4258T (optional ALC5640) |
| Power Supply | |
| Power Input | 12V DC |
| Power Consumption | Depending on Configuration |
| Mechanical & Environment | |
| Dimensions | 146mm x 102mm x 1.6mm |
| Weight | 115g |
| Temperature | Commercial: 0℃ to +70℃, Extended Commercial: -20℃ to +70℃, Industrial: -40℃ to +85℃ |
| Relative Humidity | 10% to 90%, non-condensing |
| MTBF | >100 000 Hours |
| Shock | 50G/25ms |
| Vibration | 20G/0-600Hz |

Interface Diagram:



ABOUT POLYHEX

As a board level and system level designer and manufacturer, Polyhex, with 9- year experience, always delivers best-in-class embedded computing solutions based on both ARM and X86 architecture, including hardware customization and software debugging etc. Partnered with silicon vendors like Intel, NXP, ST, Rockchip, Allwinner and so on, we have earned trust from clients worldwide in over 30 countries. Polyhex is also certified with ISO9001 and ISO13485 for the self-owned manufacture facility.

