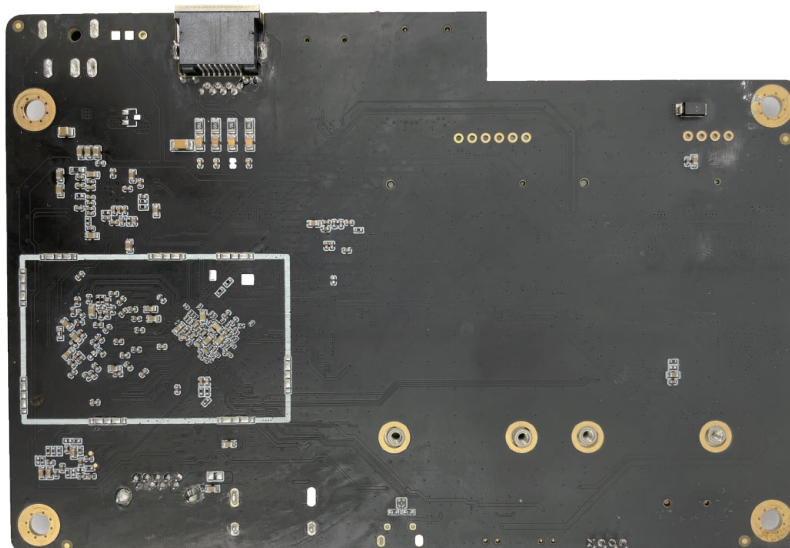
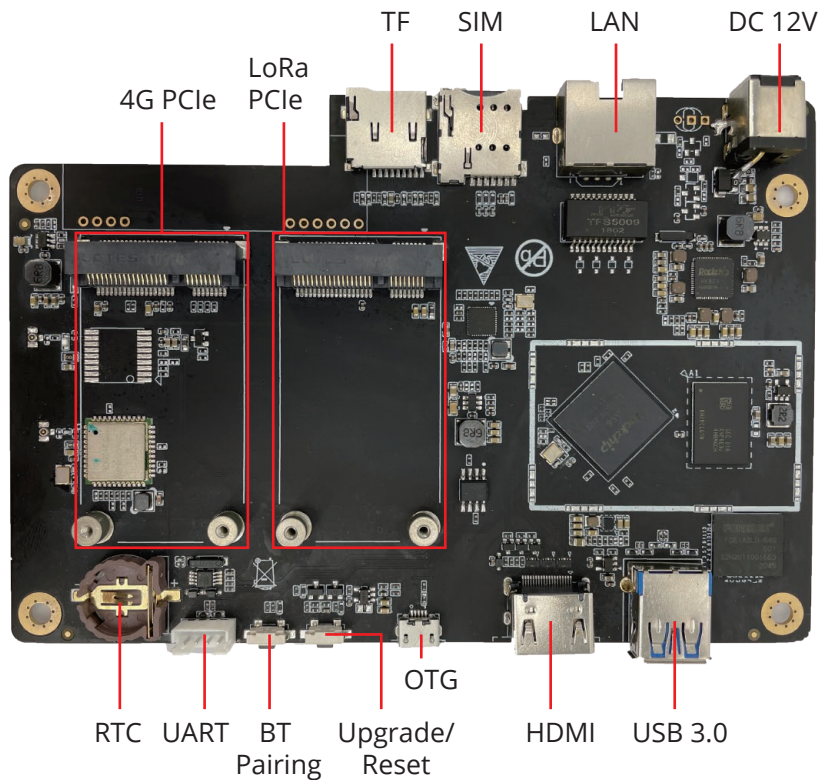




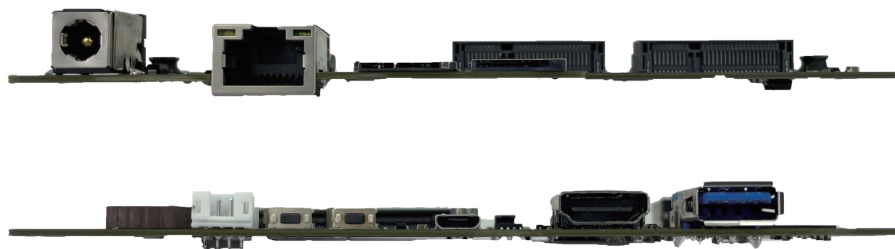
Embedded Motherboard Based on Rockchip RK3566 Quad-core Cortex-A55 CPU



Specification:

| System | |
|------------------|--|
| CPU | Rockchip RK3566 Quad-core ARM Cortex-A55 1.8GHz |
| Memory | 4GB LPDDR4 |
| Flash | 64GB eMMC |
| OS | Ubuntu 20.04 |
| Communication | |
| RJ45 | 1 x 100/1000M LAN |
| WIFI & Bluetooth | WIFI 2.4G, BT4.2 |
| LoRa | 1 x LoRa Gateway, support 470MHz/868MHz/915MHz |
| 4G | 1 x 4G Module |
| GPS | 1 x GPS Module |
| I/O Interfaces | |
| USB | 1 x USB 3.0, 1 x Micro USB (OTG) |
| Serial Port | 1 x TTL DEBUG |
| PCIe | 1 x Mini PCIe (4G), 1 x Mini PCIe (LoRa) |
| HDMI | 1 x HDMI OUT |
| Key | 1 x Bluetooth Pairing Key, 1 x Upgrade/Reset Key |
| SIM Slot | 1 x SIM Slot |
| TF Slot | 1 x TF Slot |
| RTC | 1 x RTC |
| Power Supply | |
| Power Input | 1 x 12V DC IN |
| Mechanical | |
| Dimension | 150 x 102 x 11.8 mm |

I/O Interfaces:



ABOUT POLYHEX

As a board level and system level designer and manufacturer, Polyhex, with 9-year experience, always delivers best-in-class embedded computing solutions based on both ARM and X86 architecture, including hardware customization and software debugging etc. Partnered with silicon vendors like Intel, NXP, ST, Rockchip, Allwinner and so on, we have earned trust from clients worldwide in over 30 countries. Polyhex is also certified with ISO9001 and ISO13485 for the self-owned manufacture facility.

