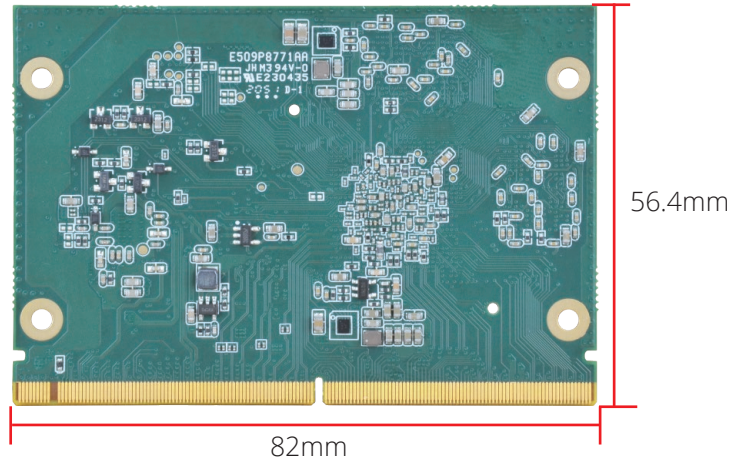
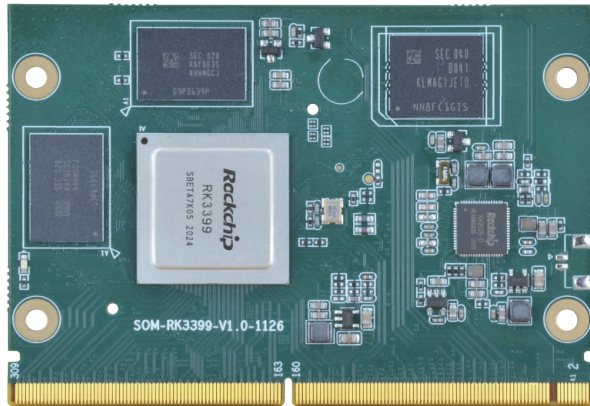




System on Module Based on Rockchip RK3399 CPU

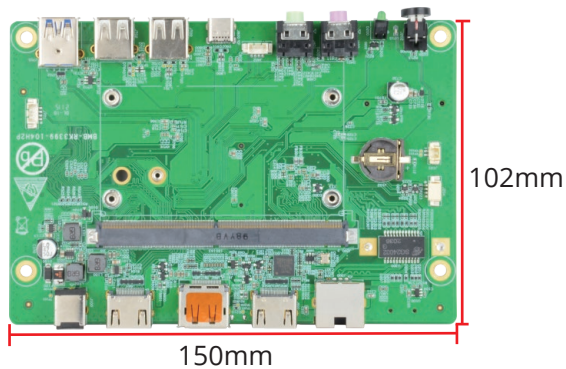


Specification:

System	
Master Control Chip	Rockchip RK3399
Processor	Dual core Cortex-A72 + quad core Cortex-A53 with frequency up to 1.8GHz
GPU	ARM Mali-T864 GPU core
Memory	4GB LPDDR4
Storage	16GB eMMC
OS	Android 8.1, Ubuntu
I/O Interfaces	
USB 2.0	2 x USB 2.0
USB 3.0	1 x USB 3.0
USB OTG	1 x USB OTG
PCIe	1 x PCIe
I2C	9 x I2C
UART	5 x UART
SPI	6 x SPI
HDMI	1 x HDMI
eDP	1 x eDP output
DSI MIPI	1 x MIPI output
LAN	1 x 10/100/1000Mbps LAN
I2S/PCM	1 x I2S/PCM
ADC IN	5 x ADC input
RTC CLKIN	1 x RTC CLKIN
GPIO	GPIO multiplexing up to 122
Physical Interface	Standard MXM interface
Others	
Power Supply	DC 5V/2A
Temperature Range	-20°C ~ +70°C
Dimension	82 x 56.4mm

SOM-RK3399 is compatible with the following Carrier Board:

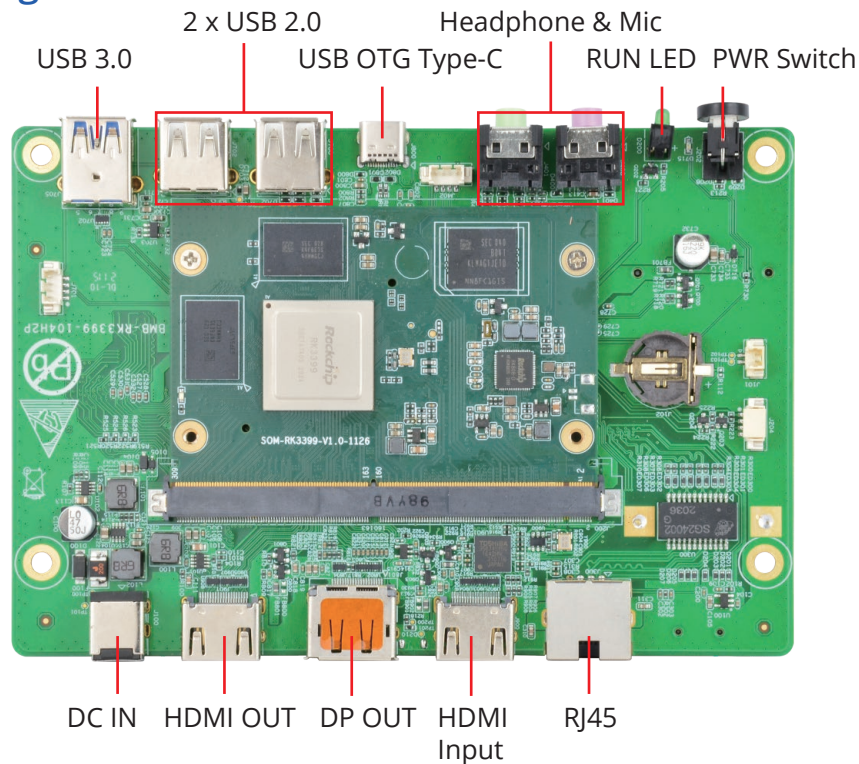
Model: BMB-02



Carrier Board Specification:

Interfaces	BMB-02
Video OUT	1 x HDMI OUT, 1 x DP OUT
Video IN	1 x HDMI IN
Audio	1 x Headphone, 1 x Mic
Network	1 x RJ45
Power Supply	1 x DC-IN
USB	1 x USB 3.0, 2 x USB 2.0, 1 x USB OTG Type-C
LED & Switch	1 x RUN LED, 1 x PWR Switch

Interface Diagram:



ABOUT POLYHEX

As a board level and system level designer and manufacturer, Polyhex, with 9-year experience, always delivers best-in-class embedded computing solutions based on both ARM and X86 architecture, including hardware customization and software debugging etc. Partnered with silicon vendors like Intel, NXP, ST, Rockchip, Allwinner and so on, we have earned trust from clients worldwide in over 30 countries. Polyhex is also certified with ISO9001 and ISO13485 for the self-owned manufacture facility.

