

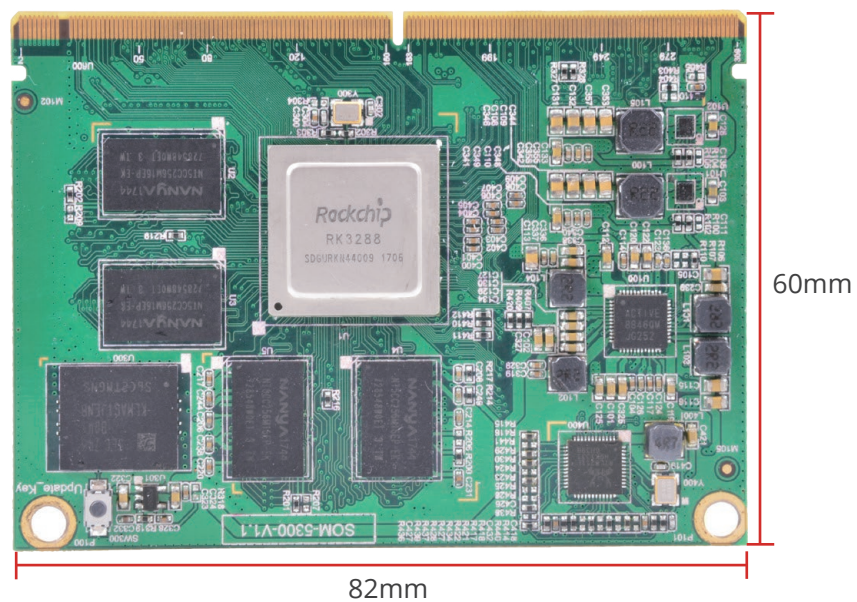


## System on Module based on Rockchip RK3288 Quad-core CPU

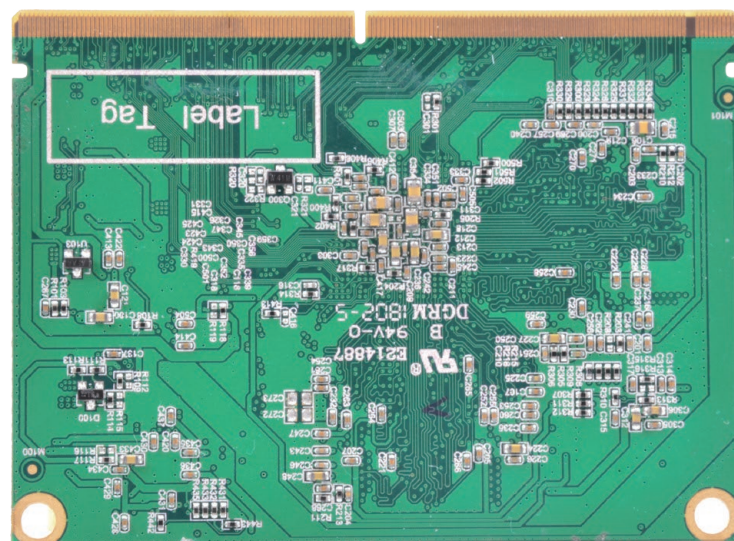
### Features:

- Onboard with Rockchip RK3288 Cortex-A17 Quad Core CPU
- Onboard 2GB DDR3 RAM (default, up to 4GB)
- Onboard 16GB eMMC (default, 8G, 32G,64G,128G optional)
- 1 x HSIC, 6 x I2C, 5 x UART, 2 x SPI, 2 x SDIO, 1 x I2S0
- 1 x USB OTG, 2 x USB2.0
- Display ports: 1 x HDMI, 1 x eDP, 1 x LVDS
- 5V/2A DC input
- Support Android 7.1, Debian 9
- Size: 82 x 60 x 1.2mm

Front View:



Back View:



## Specification:

System	
CPU	Rockchip RK3288 Quad Core Cortex-A17 1.8GHz CPU
GPU	ARM Mali-T764 GPU core
RAM	2GB DDR3 for default (4GB optional)
Storage	16GB eMMC for default(8GB/32GB/64GB/128GB optional)
Operation Ststem	Android 7.1, Debian 9
I/O Interfaces	
USB 2.0	2 x USB2.0
USB OTG	1 x USB OTG
HSIC	1 x HSIC
I2C	6 x I2C
UART	5 x UART
SPI	2 x SPI
SDIO	2 x SDIO
I2S0	1 x I2S0
HDMI	1 x HDMI
eDP	1 x eDP output
LVDS	1 x Dual 8bit LVDS output
DSI MIPI	1 x 4Lane MIPI ouput
CSI MIPI	2 x 4Lane MIPI input
CIF	1 x 8bit CIF camera input
LAN	1 x 10/100/1000Mbps LAN
ADC IN	3 x ADC input
RTC CLKIN	1 x RTC
GPIO	GPIO reuse up to 155
Connecting	Standard MXM3.0 314P connector MM70-314-310B1-1-R300/JAE Electronics
Power	
Power Supply	5V/2A DC input



### ABOUT POLYHEX

As a board level and system level designer and manufacturer, Polyhex, with 9- year experience, always delivers best-in-class embedded computing solutions based on both ARM and X86 architecture, including hardware customization and software debugging etc. Partnered with silicon vendors like Intel, NXP, ST, Rockchip, Allwinner and so on, we have earned trust from clients worldwide in over 30 countries. Polyhex is also certified with ISO9001 and ISO13485 for the self-owned manufacture facility.

