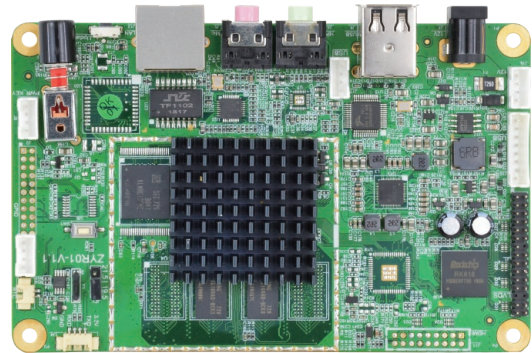




## Embedded Motherboard based on Rockchip RK3188 ARM Cortex-A9 1.6GHz CPU

### Features:

- Rockchip RK3188 CPU, 4 x Cortex-A9@1.6GHz
- Android 4.4 Operating System
- Cost-effective, stable and highly expandable
- Widely applied in intelligent control areas such as transportation, security surveillance, advertising and education



### Specification:

#### System

CPU	RK3188 4 x Cortex A9@1.6GHz
Memory	1GB DDR3(default), 2GB optional
Flash	8GB(default)\16GB\32GB eMMC, compatible with NandFlash
OS	Android 4.2/4.4

#### Video & Audio

LVDS Out	1 x Double 8bit LVDS Out
HDMI Out	1 x HDMI Out
Mic In	1 x Mic In
Headphone Out	1 x Headphone Out

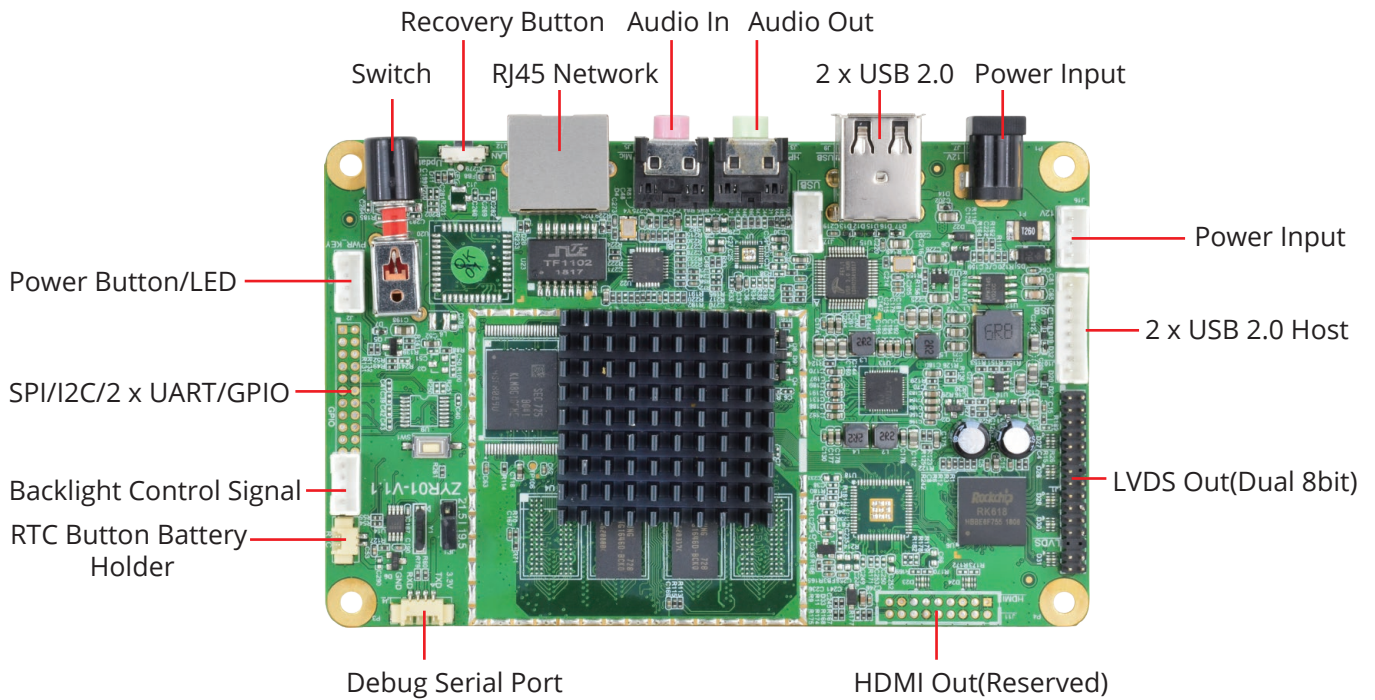
#### Other Interfaces

LAN	1 x 100M Ethernet
USB 2.0	4 x USB 2.0 Host
USB OTG	1 x USB OTG
RTC	1 x RTC
DEBUG	1 x DEBUG
GPIO	1 x PWM and LCD-Backlight EN
	1 x IIC Interface Touch Panel
	1 x SPI
	1 x RS232
	1 x TTL UART
	2 x GPIO
	2 x 3.3V Out

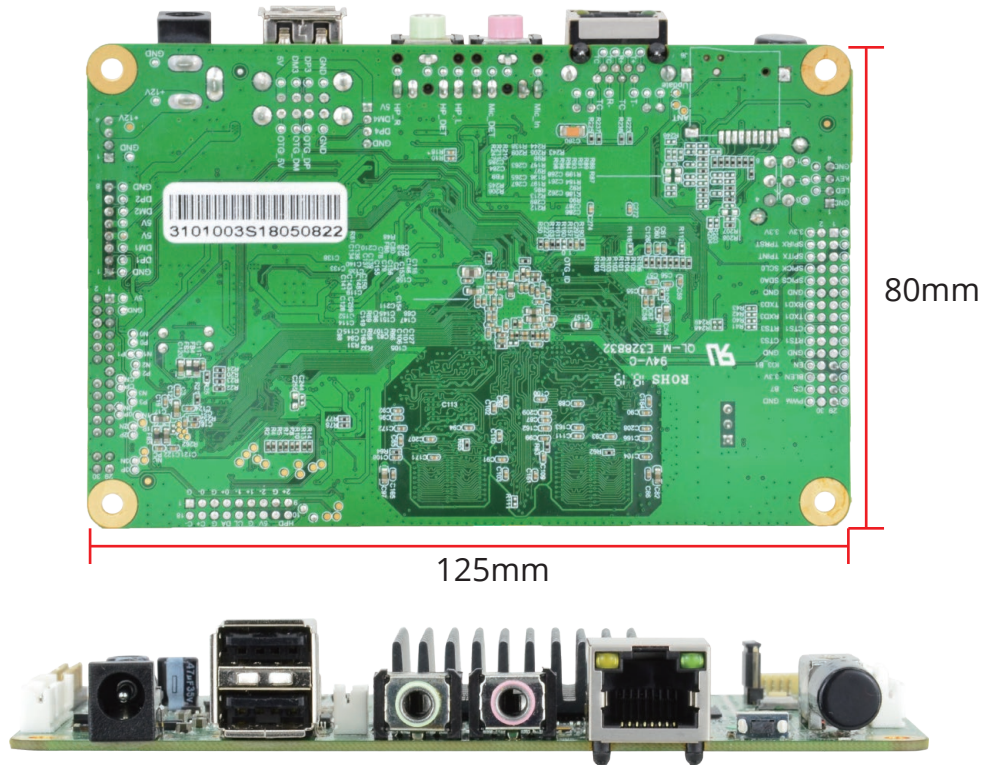
#### Power

DC In	1 x DC In 12V
Power Out	1 x Power Out 12V
Power Key	1 x Power Key
Power LED	1 x Power LED

Interface Diagram:



Dimension:



ABOUT POLYHEX

As a board level and system level designer and manufacturer, Polyhex, with 9-year experience, always delivers best-in-class embedded computing solutions based on both ARM and X86 architecture, including hardware customization and software debugging etc. Partnered with silicon vendors like Intel, NXP, ST, Rockchip, Allwinner and so on, we have earned trust from clients worldwide in over 30 countries. Polyhex is also certified with ISO9001 and ISO13485 for the self-owned manufacture facility.

