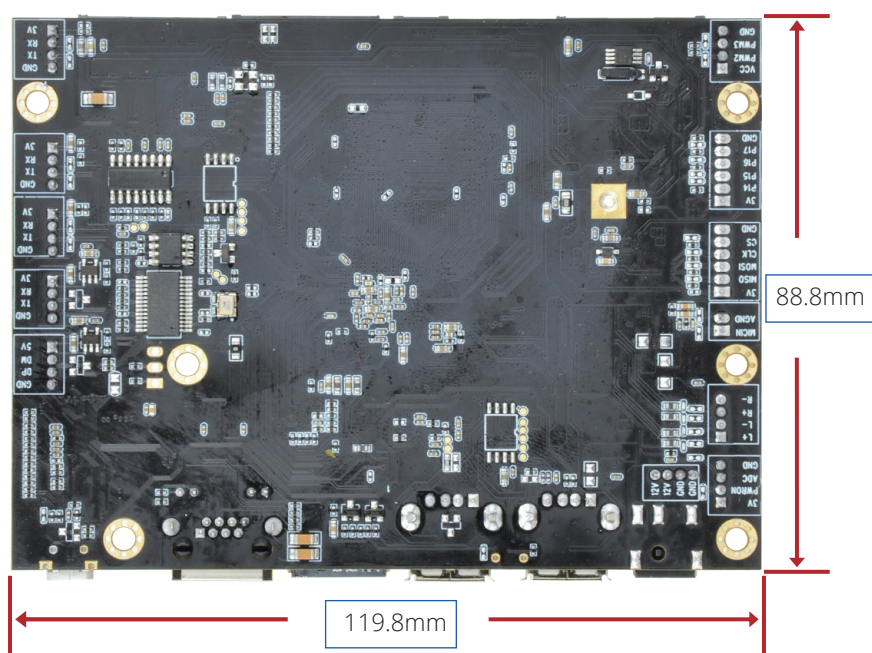
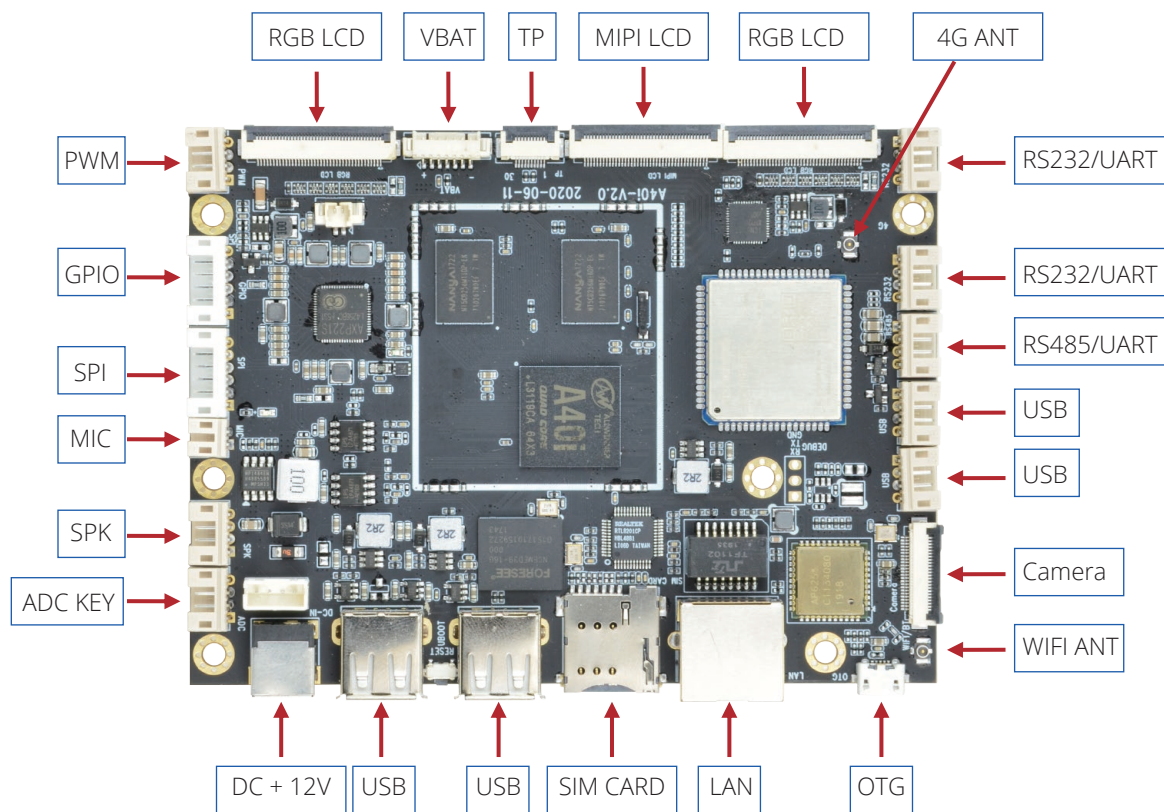




## Embedded Motherboard based on Allwinner A40I CPU



## Specification:

**System**

Master Control Chip	Allwinner A40I
Processing Unit	Quad Core Cortex-A7
RAM	1GB DDR3
Storage	16GB eMMC
OS	Android 7.1

**Communication**

Ethernet	1 x 10/100M, RJ45 interface
Wifi	1 x Wifi
4G	1 x 4G (Micro SIM CARD)
Bluetooth	1 x Bluetooth

**Display & Touch Panel**

Display	2 x RGB LCD
	1 x MIPI LCD
Touch Panel	1 x TP

**Other Interfaces**

Camera	1 x Camera
USB HOST	4 x USB HOST2.0
USB OTG	1 x USB OTG
RS232	2 x RS232
RS485	1 x RS485
PWM	2 x PWM
VBAT	1 x VBAT
MIC	1 x MIC
SPK	1 x SPK
SPI	1 x SPI
GPIO	4 x GPIO

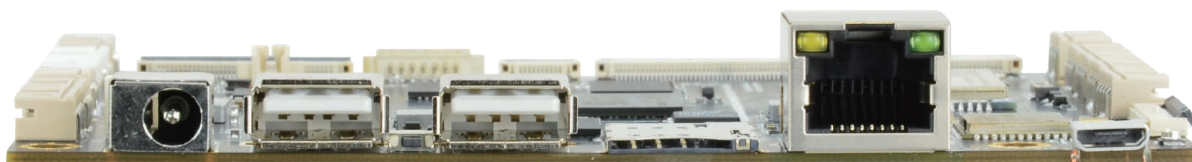
**Power**

Power Supply	1 x DC12V-2A, DC socket DC-005/5.5 x 2.1mm
--------------	--

**Mechanical**

Size	119.8 x 88.8mm
------	----------------

## I/O Interfaces:

**ABOUT POLYHEX**

As a board level and system level designer and manufacturer, Polyhex, with 9-year experience, always delivers best-in-class embedded computing solutions based on both ARM and X86 architecture, including hardware customization and software debugging etc. Partnered with silicon vendors like Intel, NXP, ST, Rockchip, Allwinner and so on, we have earned trust from clients worldwide in over 30 countries. Polyhex is also certified with ISO9001 and ISO13485 for the self-owned manufacture facility.

