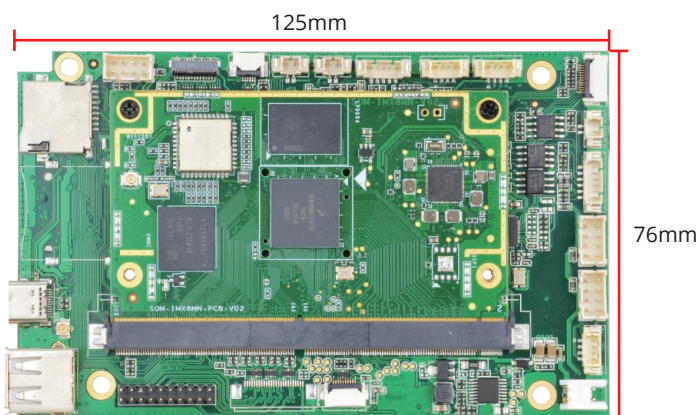
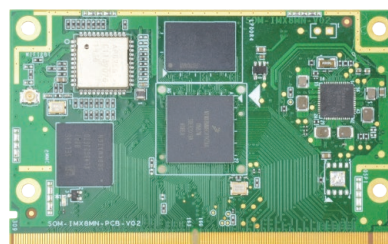




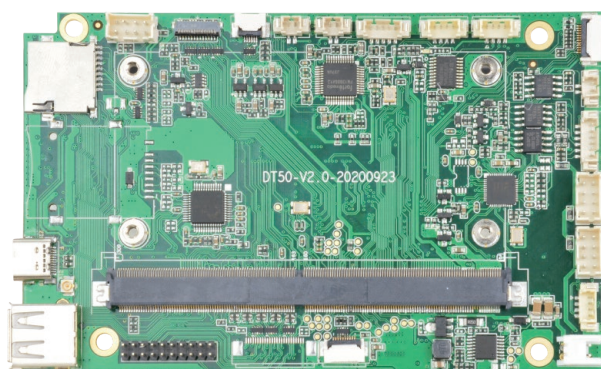
Embedded Carrier Board + Core Board based on NXP i.MX 8M Mini Quad



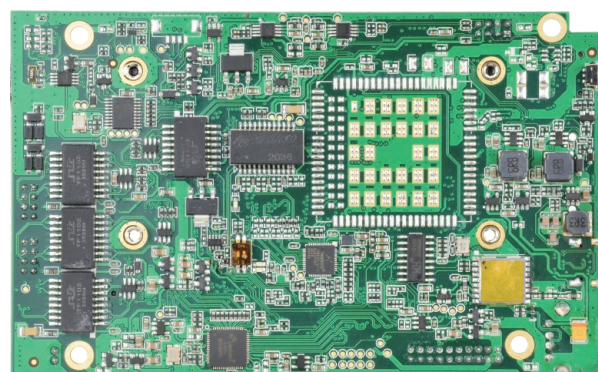
Carrier Board + Core Board



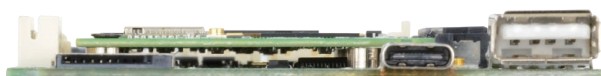
Core Board (Front View)



Carrier Board (Front View)



Carrier Board (Back View)



I/O Interfaces



Specification:

System	
Processor	i.MX 8M Mini Quad
Clock Frequency	1.5GHz Quad Core
RAM	4GB
Flash/eMMC	32GB eMMC
RTC	Yes

Communication

Wireless Insert WIFI IEEE802.11 a/b/g/n, support AP mode

Bluetooth Support Bluetooth 4.0 protocol

Interfaces

Ethernet 3

USB 1 x OTG, USB Type-C

1 x Host, USB Type-A

CAN 1

RS485 2 x RS485

TF Slot 1 x TF Slot, support up to 128GB

TP 1

MIPI CSI 1

Light Sensor 1

SPK 2

Digital Mic 3

Others

Dimension 125mm x 76 mm (carrier board + core board)

Power Supply 12V/1A

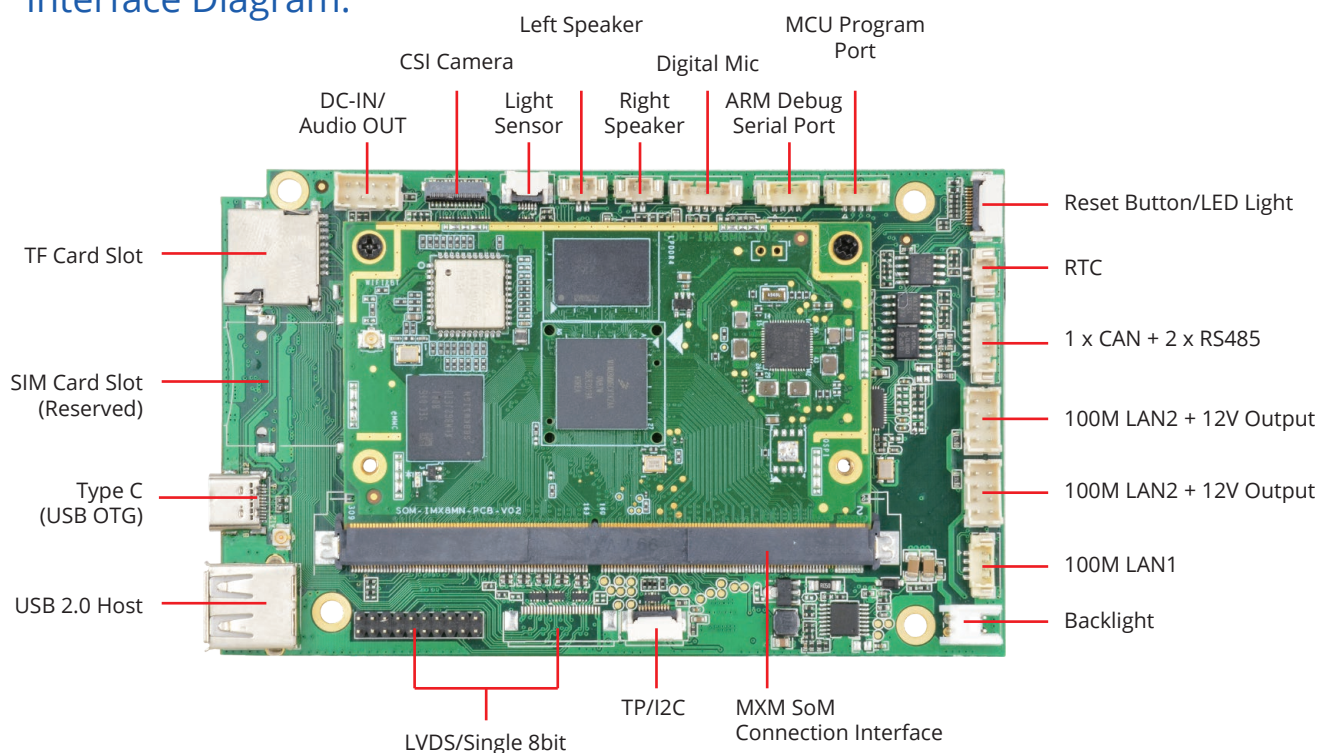
Temperature range -20°C to 70°C

Operating System

OS (Linux) Yocto 2.5.2, Android 10, Ubuntu 18.04 server

Bootloader U-boot

Interface Diagram:



ABOUT POLYHEX

As a board level and system level designer and manufacturer, Polyhex, with 9-year experience, always delivers best-in-class embedded computing solutions based on both ARM and X86 architecture, including hardware customization and software debugging etc. Partnered with silicon vendors like Intel, NXP, ST, Rockchip, Allwinner and so on, we have earned trust from clients worldwide in over 30 countries. Polyhex is also certified with ISO9001 and ISO13485 for the self-owned manufacture facility.

