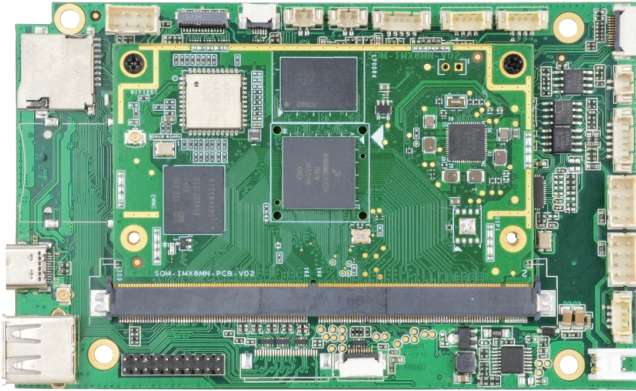
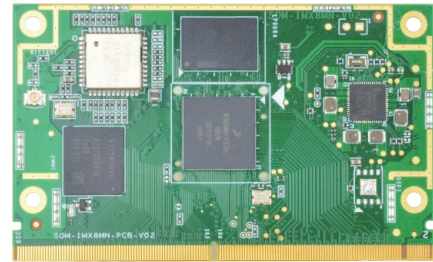




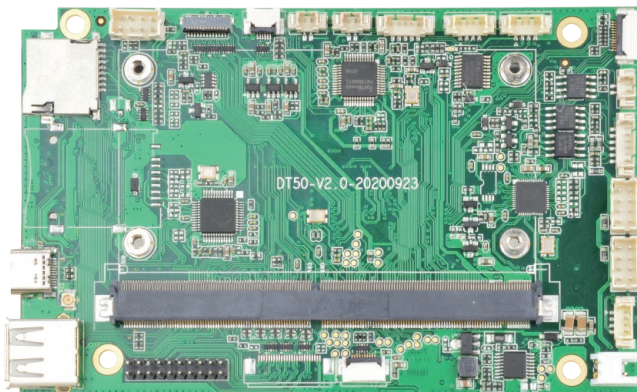
# Embedded Carrier Board + Core Board based on NXP i.MX 8M Nano SoloLite



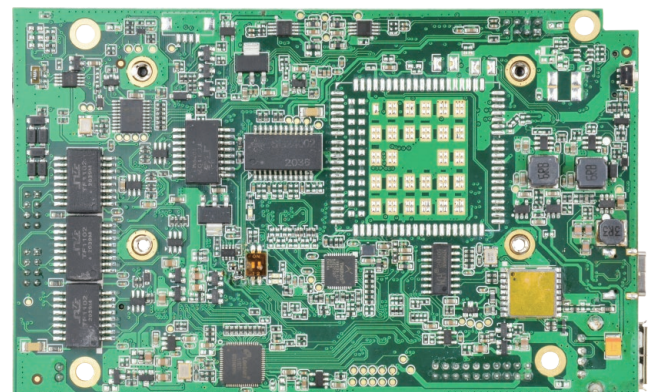
Carrier Board + Core Board



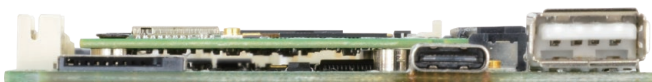
Core Board (Front View)



Carrier Board (Front View)



Carrier Board (Back View)



I/O Interfaces



## Specification:

<b>System</b>	
Processor	i.MX 8M Nano SoloLite
Clock frequency	1.4GHz single core
RAM	2GB
Flash/eMMC	32GB eMMC
RTC	Yes
<b>Communication</b>	
Wireless	Insert WIFI IEEE802.11 a/b/g/n, support AP mode
Bluetooth	Support Bluetooth 4.0 protocol
<b>Interfaces</b>	
Ethernet	2
USB	1 x OTG, USB Type-C 1 x Host, USB Type-A
CAN	1
RS485	2 x RS485
TF slot	1 x TF Slot, support up to 128GB
<b>Others</b>	
Dimension	125mm x 76 mm (carrier board + core board)
Power Supply	12V/1A
Temperature range	-20°C to 70°C
<b>Operating System</b>	
OS (Linux)	Yocto 2.7
Bootloader	u-boot

### ABOUT POLYHEX

As a board level and system level designer and manufacturer, Polyhex, with 9 years' experience, always delivers best-in-class embedded computing solutions based on both ARM and X86 architecture, including hardware customization and software debugging etc. Partnered with silicon vendors like Intel, NXP, ST, Rockchip, Allwinners and so on, we have earned trust from clients worldwide in over 30 countries. Polyhex is also certified with ISO9001 and ISO13485 for the self-owned manufacture facility.

