



## Facial Recognition and Temperature Measurement AIO Machine based on RK3288 CPU

### Features:

- Fast temperature measurement (<1 second) for easy and quick passing
- Gateway control, mask wearing status recognition, temperature display, high temperature alarm, video intercom function
- Touch screen with fast response to improve work efficiency
- Suitable for employee attendance, security check, subway AFC system, schools, hotels, airports, hospitals, shopping malls, scenic areas, stations, and wharf, etc.



### Description:

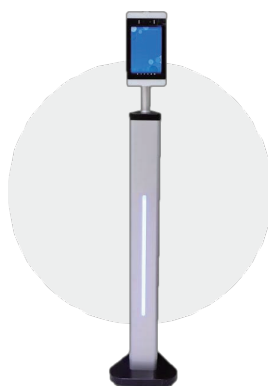
PPC-RK3288-081 is an intelligent access control terminal. It adopts face recognition and infrared thermal imaging algorithm, easy to install and operate. It also has binocular living detection, temperature display and high temperature alarm functions.

ID card module can be added to meet different application scenarios like employee attendance, security check, subway AFC system, schools, hotels, airports, hospitals, shopping malls, scenic areas, stations, and wharf, etc.

In addition, its binocular living camera can avoid the attack of non-livings like phones, photos and videos, and detect someone who is not wearing mask to ensure security and epidemic prevention.



Barrier Gate Stand



Standing Type



Desktop



Wall-mounted

## Basic Specification:

Item	Parameter	Specification
System	Processor	Rockchip-RK3288
	DDR	2GB/4G DDR3
	Inside Memory	8GB EMMC5.0
	Operating System	Android 7.1
Display	Type	IPS
	Size	8.0 Inch
	Resolution	1200 x 1920
	Interface	MIPI
	Touch panel	No (can be added)
Camera	Type	Binocular wide dynamic camera
	Resolution	200W
	Interface	MIPI/USB
	Focus distance	0.3-0.8M
Input and output	Audio	1 x 8Ω 2W stereo speaker
	USB	1 x USB HOST + 1 x USB OTG
	Serial port	232/RS485
	Relay	Single channel (dual channels for option)
	Wiegand interface	Single channel (26/34 bit output for option)
	Network	LAN + WIFI(2.4G/5G)
	NFC	No (can be added)

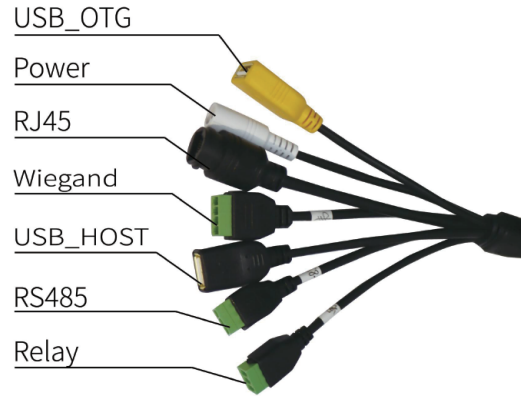
## Main Functions:

Item	Specification
Face database	Support highest up to 30,000
1:N face recognition	Support
1:1 face contrast	Support
Stranger detection	Support
Recognized distance configuration	Support
UI interface configuration	Support
Device long-distance upgrade	Support

## Working Parameter:

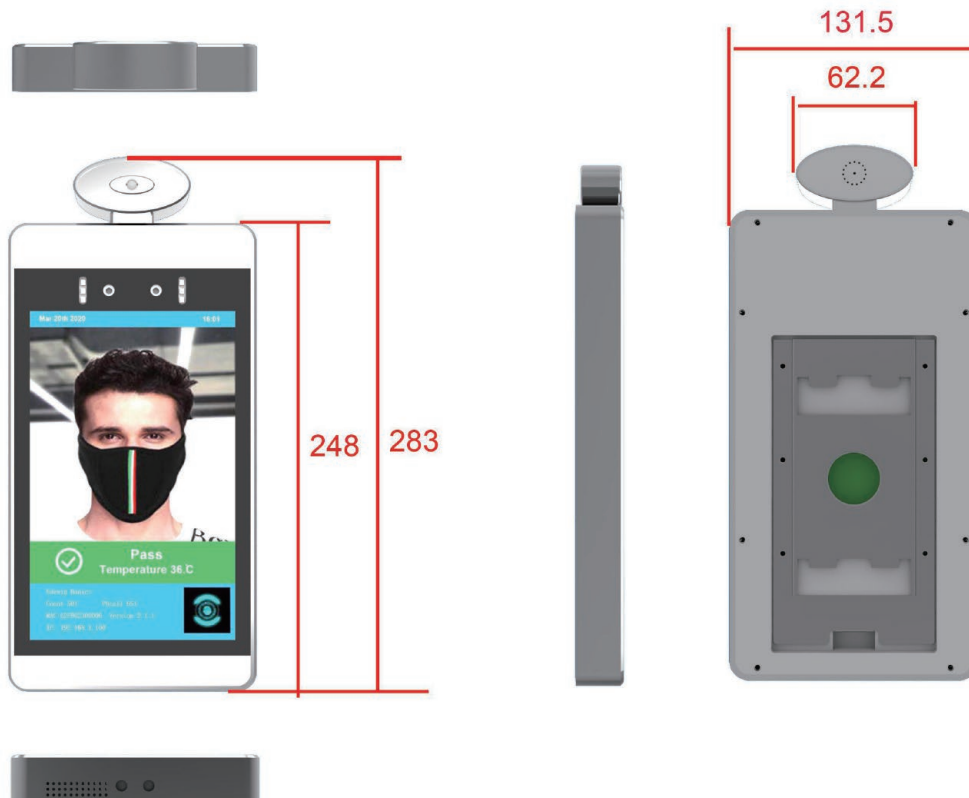
Item	Specification
Working mode	Support normal, standby and sleep mode
Infrared thermal imaging	64 pixels
Measurement accuracy	±0.3°C
Temperature output resolution	0.25°C
Measurement environment	10°C-35°C
Thermal imaging field	8 x 8
Measurement angle	60 degree
Measurement field array	8 x 8
Recommended measurement distance	0.3-0.8M
Working voltage	DC12V(±10%)
Power consumption	Maximum 35W
Working temperature	+15 to +35°C
Storage temperature	-20°C to 60°C
Installation methods	Barrier gate stand/standing/wall-mounted

Interfaces:



Dimensions:

unit: mm



ABOUT POLYHEX

As a board level and system level designer and manufacturer, Polyhex, with 9 years' experience, always delivers best-in-class embedded computing solutions based on both ARM and X86 architecture, including hardware customization and software debugging etc. Partnered with silicon vendors like Intel, NXP, ST, Rockchip, Allwinners and so on, we have earned trust from clients worldwide in over 30 countries. Polyhex is also certified with ISO9001 and ISO13485 for the self-owned manufacture facility.

