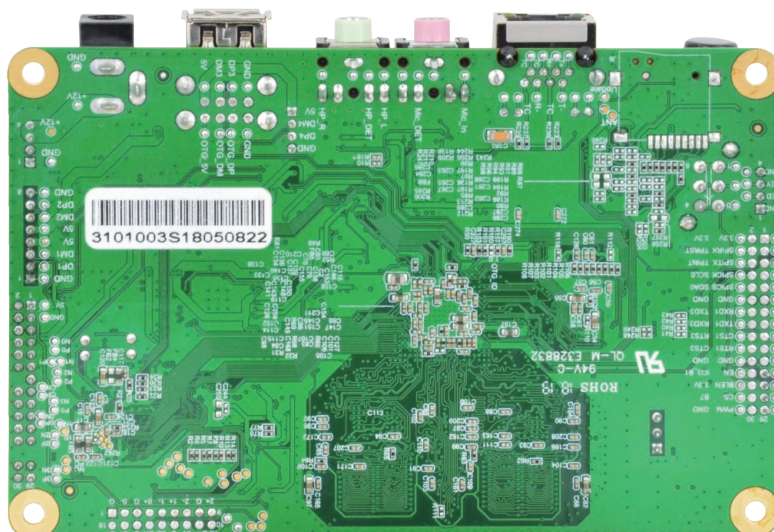
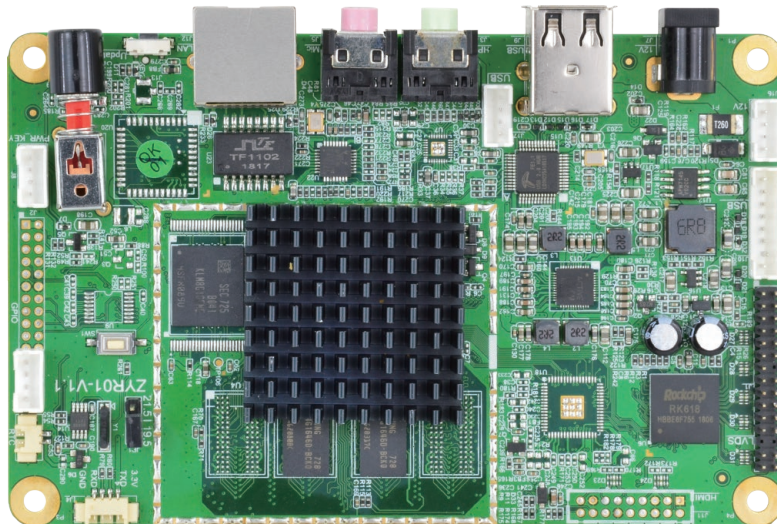




Embedded Motherboard based on Rockchip RK3188 ARM Cortex-A9 1.6GHz CPU

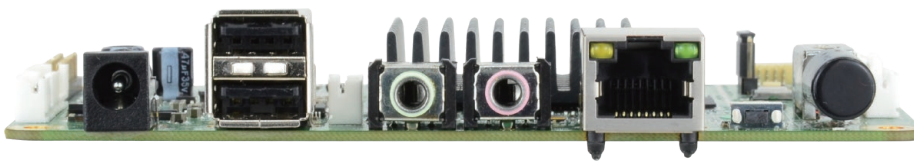
Features:

- Rockchip RK3188 CPU, 4 x Cortex-A9@1.6GHz
- Android 4.4 Operating System
- Cost-effective, stable and highly expandable
- Widely applied in intelligent control areas such as transportation, security surveillance, advertising and education



Specification:

CPU	RK3188 4 x Cortex A9@1.6GHz
DDR3	1GB(default)\2GB
Flash	8GB(default)\16GB\32GB eMMC, compatible with NandFlash
LAN	1 x 100M Ethernet
Audio	1 x Mic in 1 x Headphone out
USB2.0	4 x USB2.0 Host
OTG	1 x USB OTG
DC In	1 x DC In 12V
LVDS Out	1 x Double 8bit LVDS Out
HDMI Out	1 x HDMI Out
Power OUT	1 x Power OUT 12V
RTC	1 x RTC
DEBUG	1 x DEBUG
KEY LED	1 x Power Key 1 x Power LED
GPIO	1 x PWM and LCD-Backlight EN 1 x IIC Interface Touch Panel 1 x SPI 1 x RS232 1 x TTL UART 2 x GPIO 2 x 3.3V Out
OS	Android 4.4



ABOUT POLYHEX

As a board level and system level designer and manufacturer, Polyhex, with 9 years' experience, always delivers best-in-class embedded computing solutions based on both ARM and X86 architecture, including hardware customization and software debugging etc. Partnered with silicon vendors like Intel, NXP, ST, Rockchip, Allwinners and so on, we have earned trust from clients worldwide in over 30 countries. Polyhex is also certified with ISO9001 and ISO13485 for the self-owned manufacture facility.

