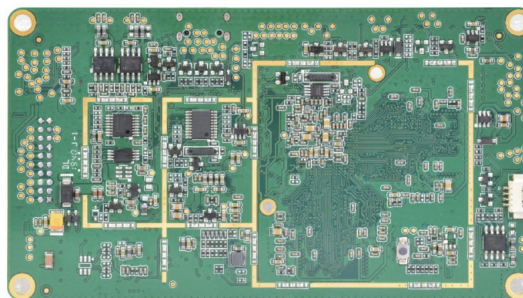
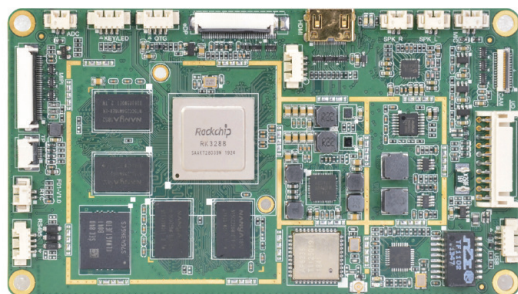




Embedded Motherboard based on RK3288 Quad Core CPU for QR Code Payment Terminal

Description

The EMB-RK3288-QR is a customized embedded motherboard for applying onto a QR payment terminal under Android 7.1. It applies RK3288 Quad Core high performance CPU with 2GB DDR3 and 16GB eMMC onboard. The board has 2 USB2.0, 1 USB OTG, 2 RS232, 1 RS485 and 1 debug TTL UART. For displaying and touch panel, it has 1 x HDMI, 4Lane eDP out, 4Lane MIPI IN and OUT.



Specification

CPU	Rackchip RK3288 Quad Core Cortex-A17 1.8Ghz CPU
GPU	ARM Mali-T764 GPU core
RAM	2GB DDR3 for default (4GB optional)
Storage	16GB eMMC for default (8GB/32GB/64GB/128GB optional)
Operation System	Android7.1 Debian 9
USB2.0	2 x USB2.0
USB OTG	1 x USB OTG
RS232	2 x RS232
RS485	1 x RS485
UART	1 x DEBUG TTL UART
HDMI OUT	1 x HDMI
eDP OUT	1 x 4Lane eDP OUT
DSI MIPI	1 x 4Lane MIPI OUT
CSI MIPI	1 x 4Lane MIPI IN
SPK OUT	1 x L/R SPK
MIC IN	1 x MIC
LED	2 x GPIO LED
KEY	1 x Power KEY
ADC IN	1 x ADC IN
LAN	1 x LAN
WIFI	2.4GHz/5GHz, support IEEE 802.11b/g/n/ac
BT	BT4.0、FHSS/GFSK/DPSK/DQPSK
RTC	1x RTC Power IN
Power	12V/1A
Size	67mm*120mm*11.0mm