



Small Size Embedded Motherboard based on RK3288 Quad Core CPU

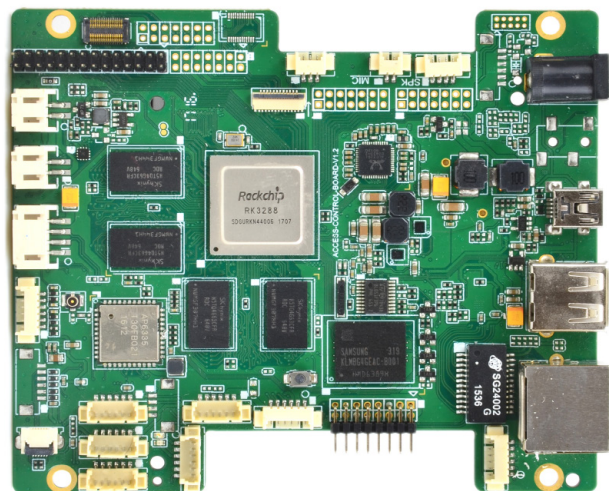
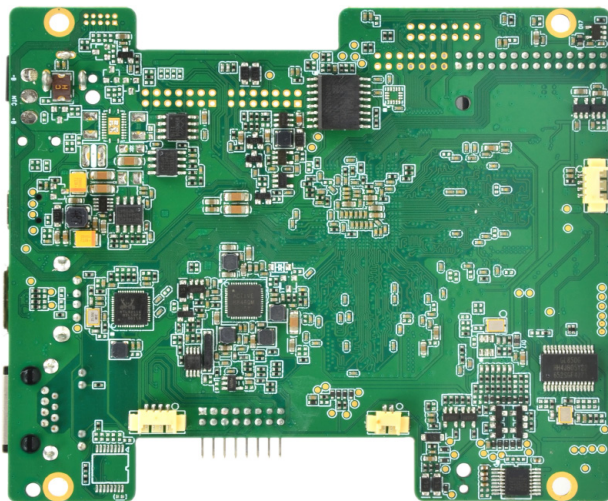
Features:

- Onboard with Rockchip RK3288 Cortex-A17 Quad Core CPU
- Onboard 2GB DDR3 (up to 4GB)
- Onboard 8GB eMMC (default, 16G, 32G optional)
- Video out: 1 x MIPI DSI, 1 x HDMI, 1 x EDP
- Video in: 1 x MIPI CSI, 1 x 8bit Parallel CIF camera IN
- 1 x USB OTG, 2 x USB 2.0, 1 x Lan, 1 x POE
- 4 x GPIO, 2 x RS232
- TP: 1x IIC Interface Touch Panel
- Support Android 7.1, Linux Debian 9



Board Description:

EMB-RK3288-MJ is a customized motherboard for a smart face recognition access controlling system. It is onboard with RK3288 Cortex-A17 Quad Core CPU, 2GB DDR3 Ram and 8GB eMMC. The board is connected with a touch panel by MIPI port, a doorbell and door lock by GPIO port, and a camera for collecting face information. It is thin and small in size and with ultra-low power consumption.



Specification:

CPU	Rockchip RK3288 ARM Cortex-A17 Quad Core CPU, Mali-T764 GPU core
DDR3	DDR3 1G(Default, 2G/4G optional)
Flash	8GB(Default)/16G/32G optional
Video Out	1 x Dual 8bit LVDS(up to 2K supported)
	1 x MIPI DSI
	1 x HDMI OUT
	1 x EDP
Video In	1 x MIPI CSI
	1 x 8bit Parallel CIF Camera in
Audio	1 x Mic in
	1 x Speaker Lout , 1 x Speaker Rout
	1 x Headphone L&R Out
SDIO	1 x SDIO
OTG	1 x USB OTG
USB2.0	2 x USB2.0 Host
LAN	1 x Gigabit Ethernet
DC	1 x 12V DC In
GPS	support GPS
POE	1 x POE
TP	1 x IIC Interface Touch Panel
LED Flash	2 x LED Flash
SPI	1 x SPI
GPIO	4 x GPIO
RS232	2 x RS232
IR	1 x IR
IIC	2 x IIC
OS	Android 7.1, Linux Debian 9
Size	108 x 93 x 1.2mm

ABOUT POLYHEX

As a board level and system level designer and manufacturer, Polyhex, with 9 years' experience, always delivers best-in-class embedded computing solutions based on both ARM and X86 architecture, including hardware customization and software debugging etc. Partnered with silicon vendors like Intel, NXP, ST, Rockchip, Allwinners and so on, we have earned trust from clients worldwide in over 30 countries. Polyhex is also certified with ISO9001 and ISO13485 for the self-owned manufacture facility.

