



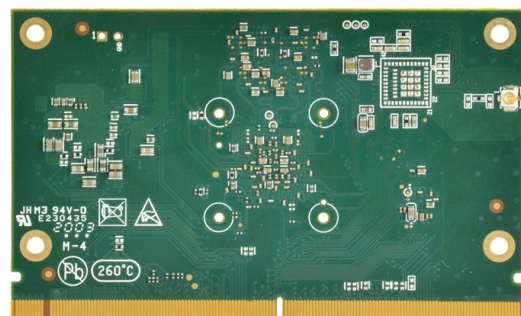
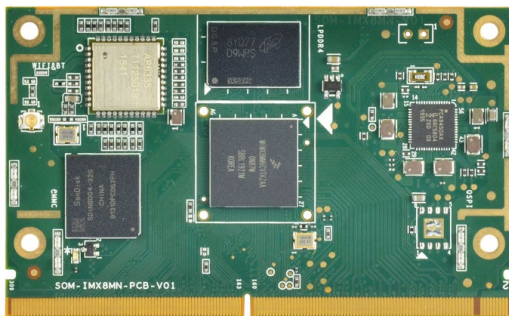
System on Module Based on NXP i.MX 8M Mini CPU

Introduction:

SOM-IMX8MN is a consumer & industrial grade core board based on NXP i.MX 8M Mini CPU, and it comes with onboard 4GB RAM and 32GB eMMC. SOM-IMX8MN supports Android9.0 operation system and a variety of interfaces like HDMI, SPDIF, DSI, CSI, USB2.0 & USB OTG, GPIO, etc. For internet connection, it is perfectly compatible with WIFI-2.4Ghz/5Ghz, BT4.0 and 10/100/1000M LAN.

Features:

- NXP i.MX 8M Mini CPU
- Android 9.0 operating system
- Onboard 4GB RAM 2GB optional
- 32GB eMMC 8GB/16GB/64GB/128GB optional
- 10/100/1000M LAN, WIFI-2.4Ghz/5Ghz, BT4.0



Specification:

CPU	MIMX8MM6CVTKZAA:Quad Cortex®-A53, 1.6GHz (Support Consumer&Industrial i.MX8M Mini SoloLite/Solo/DualLite/Dual/QuadLite/Quad)
LPDDR4	Onboard 4GB , Support2GB
Flash	32GB eMMC5.1, Support 8GB/16GB/64GB/128GB
WIFI&BT	WIFI-2.4GHz/5GHz、BT4.0
LAN	1x 10/100/1000M LAN Port
SDIO	1x SDIO
HDMI	1x HDMI OUT
CSI	1x CSI
DSI	1x DSI
PCIe	1x PCIe
USB	1x USB2.0、1x USB OTG
SPI	2x SPI
QSPI	1x QSPI
I2C	4x I2C
UART	3x UART
JTAG	1x JTAG
I2S	1x I2S
SAI	1x SAI, 8 Channel
GPIO	16x GPIO
SPDIF	1x SPDIF
OS	Android9.0
Physical interface	MXM3.0 (Standard 314Pin)
Power In	5VDC/2A
Size	82mm*50mm*1.2mm

ABOUT POLYHEX

As a board level and system level designer and manufacturer, Polyhex, with 9 years' experience, always delivers best-in-class embedded computing solutions based on both ARM and X86 architecture, including hardware customization and software debugging etc. Partnered with silicon vendors like Intel, NXP, ST, Rockchip, Allwinners and so on, we have earned trust from clients worldwide in over 30 countries. Polyhex is also certified with ISO9001 and ISO13485 for the self-owned manufacture facility.

