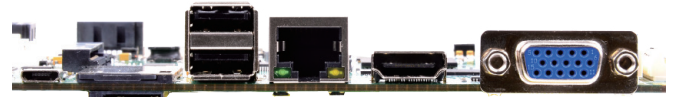
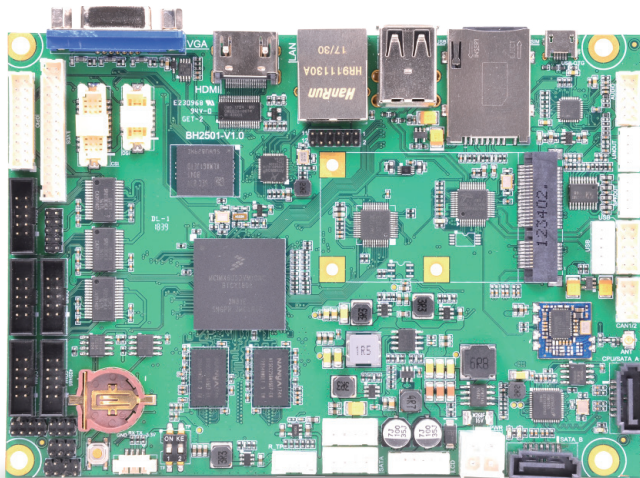
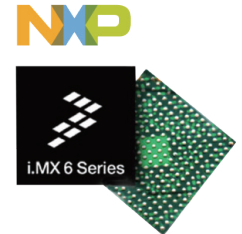


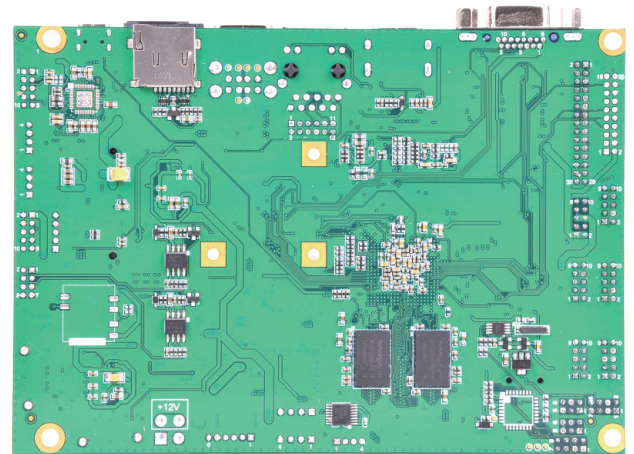
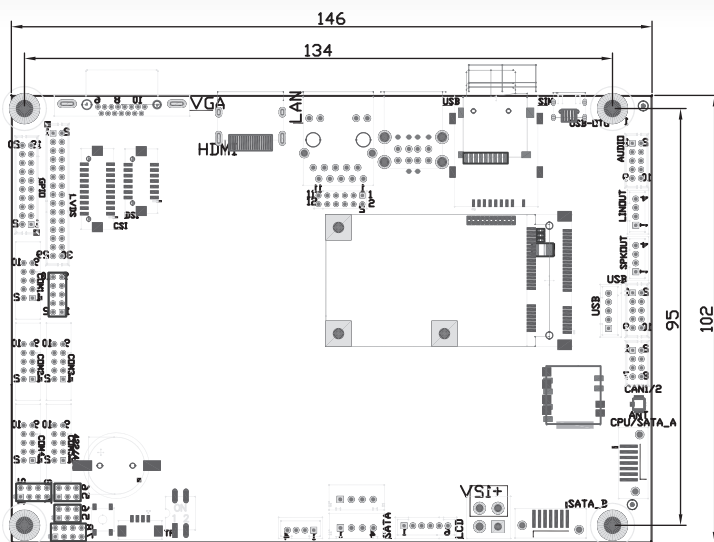


3.5inch NXP i.MX 6DualLite ARM Cortex-A9 Motherboard

- NXP i.MX 6DualLite ARM Cortex-A9 processor
- Onboard DDR3 1066MHz 1GB memory and 8GB EMMC NAND flash (default)
- Supports Triple Display: VGA/HDMI/LVDS
- Supports 1x mini-PCIe, 4x RS232, 1x RS485, 5x USB2.0, 2x CAN, 1x SIM, 1x Micro SD slot
- 3.5 inch mini size, low power consumption
- Supports Embedded Linux Yocto 2.1.3, Ubuntu 14.04, Android 7.1



Structure Diagram



Ordering Information

Part Number	CPU	RAM	Storage	Display	GbE	USB	Audio	Mini-PCIe	SATA	Operating Temp
EMB-NMX6DL-F11	NXP i.MX6 Dual Lite 1.0GHz	1G DDR3	8G eMMC	HDMI + VGA + LVDS	1	5 USB 2.0 1 Micro USB	1	1	2	-20~70°C

Technical Specifications

Core System	Processor	NXP i.MX6 Solo	
		NXP i.MX6 Dual Lite 1.0GHz (Default)	
		NXP i.MX6 Dual	
		NXP i.MX6 Quad	
	Architecture	ARM Cortex-A9	
	Memory	Onboard 1GB DDR3(Default), up to 2GB	
	Storage	eMMC 8GB (Default),16G/32G(option)	
Expansion Interfaces	Expansion Slots	1x mini-PCIe with SIM Card Slot	
Connectivity	Network LAN	1 x RJ45 AR8033	
	WiFi	1x RTL8188WEUS	
	Bluetooth	1x RTL8723 (optional)	
Internal Headers	Internal Display	1x Dual channel 8bit LVDS (expansion header)	
	Expansion Headers	2x Sata and Sata Power 1x DSI 1x CSI 4x RS232, 1x RS232/RS422/RS485 3x USB2.0 1x Power 1x GPIO 2xCAN 1x SPK(L&R) 1x Audio(Mic IN, HP Out, Line In) 1x RTP(4wire TouchPanel) 1x RTC	
External Connectors	External Display	1x VGA, 1x HDMI	
	Network	1x RJ45 AR8033	
	USB Host	2x USB 2.0	
	SIM Card Slot	1x SIM	
	SD Card Slot	1x microSD card slot	
	USB OTG	1x Micro USB	
Audio	Audio Codec	NS4258T (optional ALC5640)	
Power Specifications	Power Input	12V DC	
	Power Consumption	Depending on Configuration	
Mechanical & Environmental	Dimensions	146 x 102 x 1.6 mm	
	Size	146mm x 102mm (L x W)	
	Weight	115g	
	Temperature	Commercial:	0° to +60° C
		Extended:	-20° to +70° C
		Industrial:	-40° to +85° C
	Relative Humidity	10 to 90 %	
	MTBF	>100 000 Hours	
	Shock	50G/25ms	
Vibration	20G/0-600Hz		
Operating System		Embedded Linux Yocto 2.1.3, Ubuntu 14.04, Android 7.1	

ABOUT POLYHEX

As a board level and system level designer and manufacturer of ARM architecture embedded hardware solutions in China, Polyhex offers the cost-effective and high performance customized products worldwide in over 30 countries on the basis of the mainstream silicon vendors like NXP, ST, Rockchip, Allwinners and so on. Polyhex is also certified with ISO9001 and ISO13485 for the self-own manufacture facility.

